

STEAM
I què fem amb l' "A"?



Comunitat de primavera. 17 de maig de 2023. Vic-Manlleu. Centres STEAMcat cicle 21-24

Del pla al volum

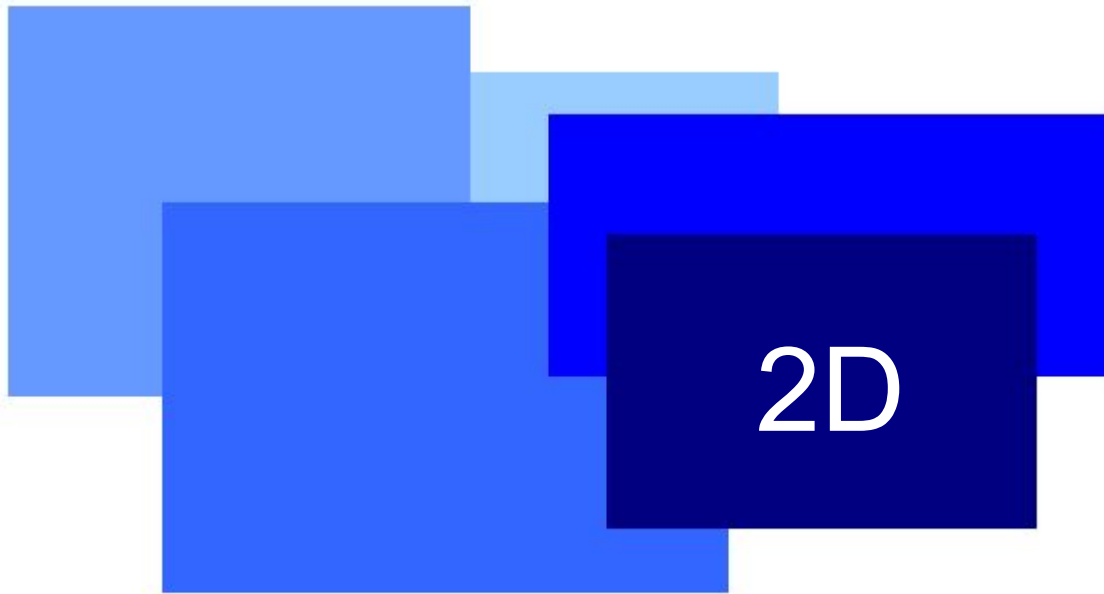
Carolina Crespo ccrespo@xtec.cat

Ambaixadora STEAMcat

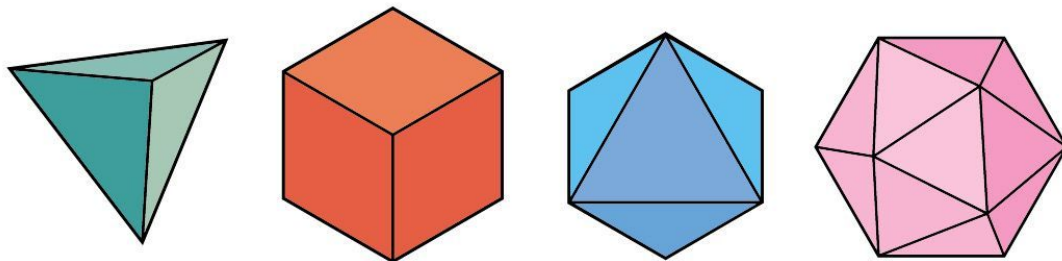
<https://ja.cat/v3CZq>

El pla

Alliberem-nos de la seva definició com element geomètric físicament impossible (infinit i sense gruix)



Les seves possibilitats expressives són infinites si el considerem com un element que es pot transformar actuant sobre ell



La capacitat expressiva del pla

Jorge Oteiza. Escultura



La capacitat expressiva del pla

Alexander Calder. Escultura



La capacitat expressiva del pla



La capacitat expressiva del pla

Pavelló alemany. Expo Barcelona
Mies Van der Rohe



La capacitat expressiva del pla

Museu Guggenheim. Bilbao
Frank Gehry



La capacitat expressiva del pla



La capacitat expressiva del pla



La capacitat expressiva del pla

Pont Storseisundet. Noruega



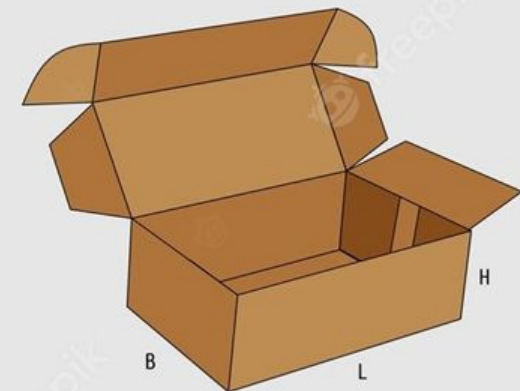
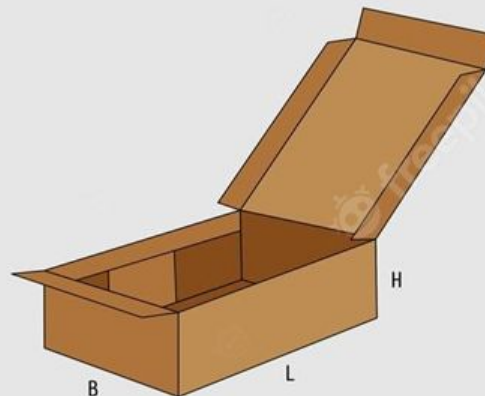
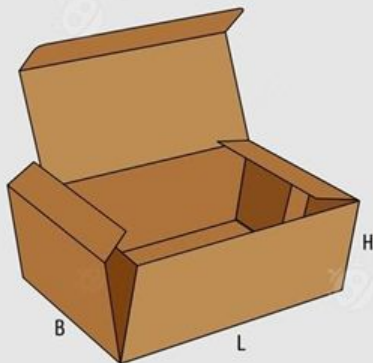
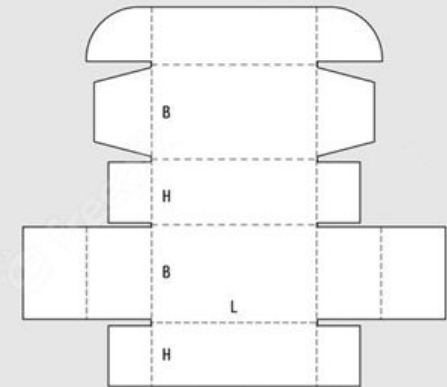
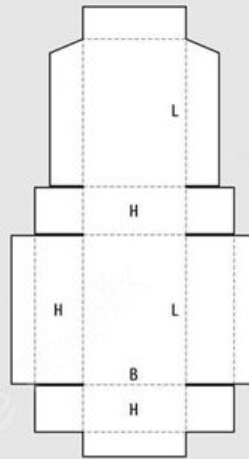
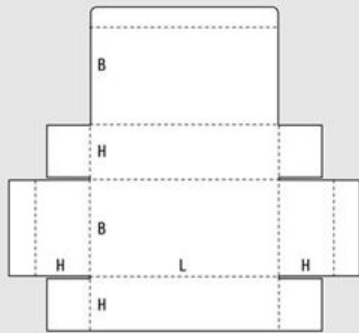
La capacitat expressiva del pla

Pont Storseisundet. Noruega

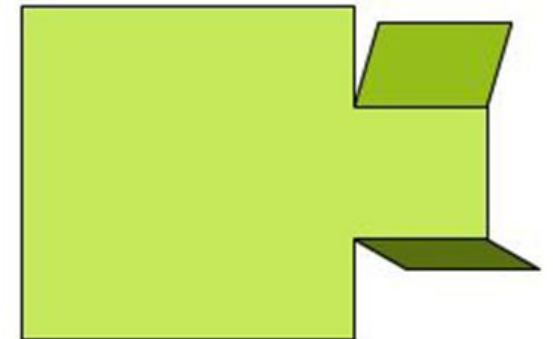
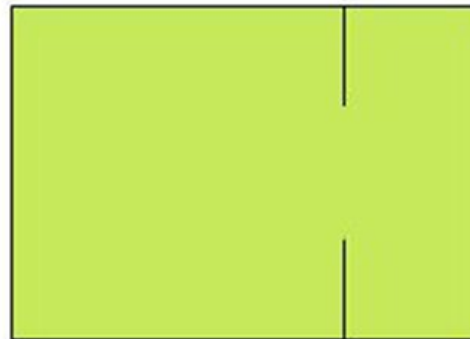
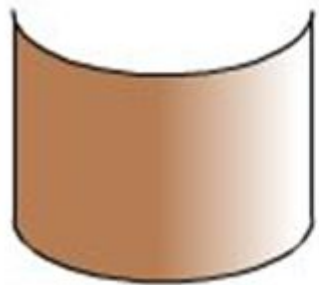
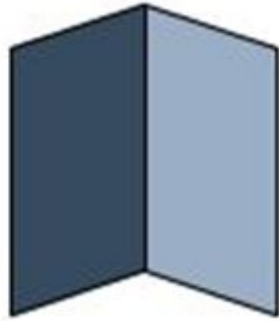


Com podem transformar una superfície 2D en un volum?

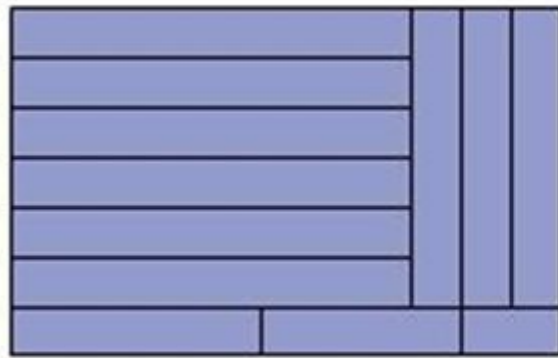
Self assembling box



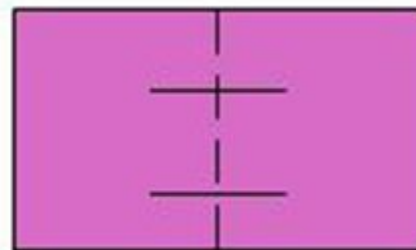
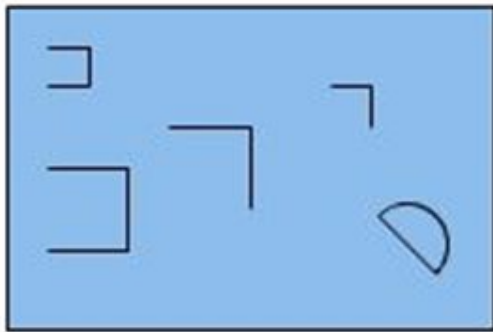
Com podem transformar
una superfície 2D en un volum?



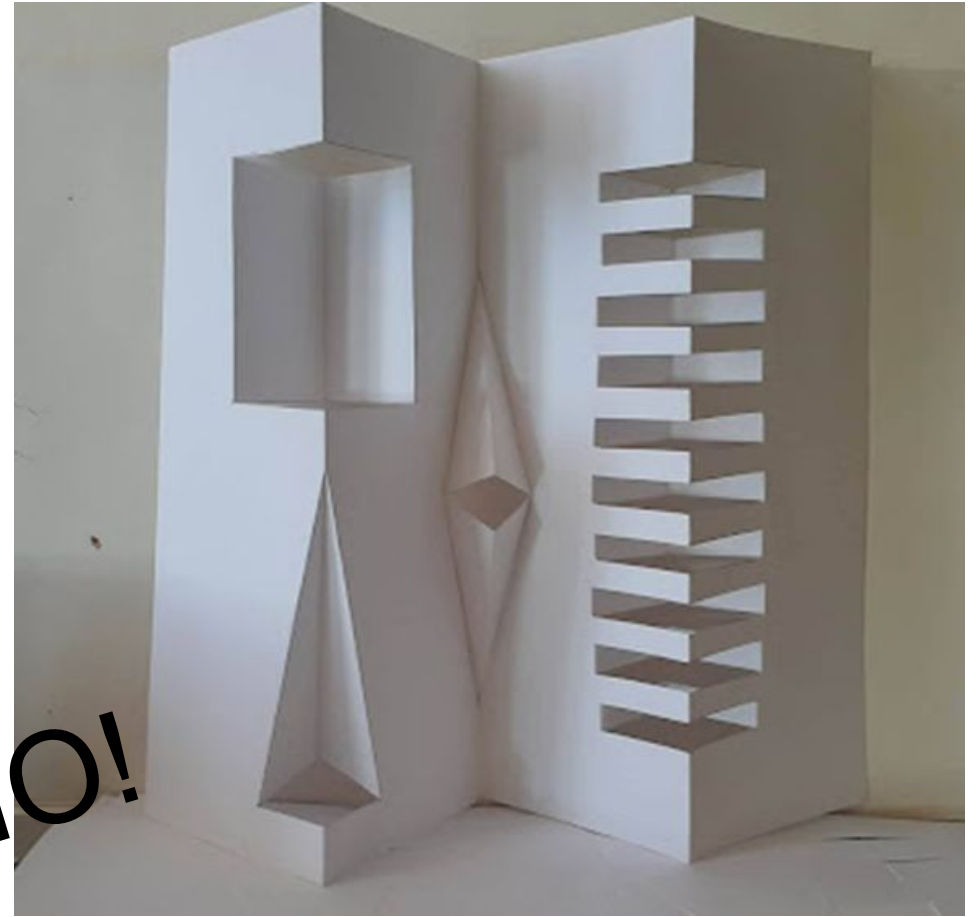
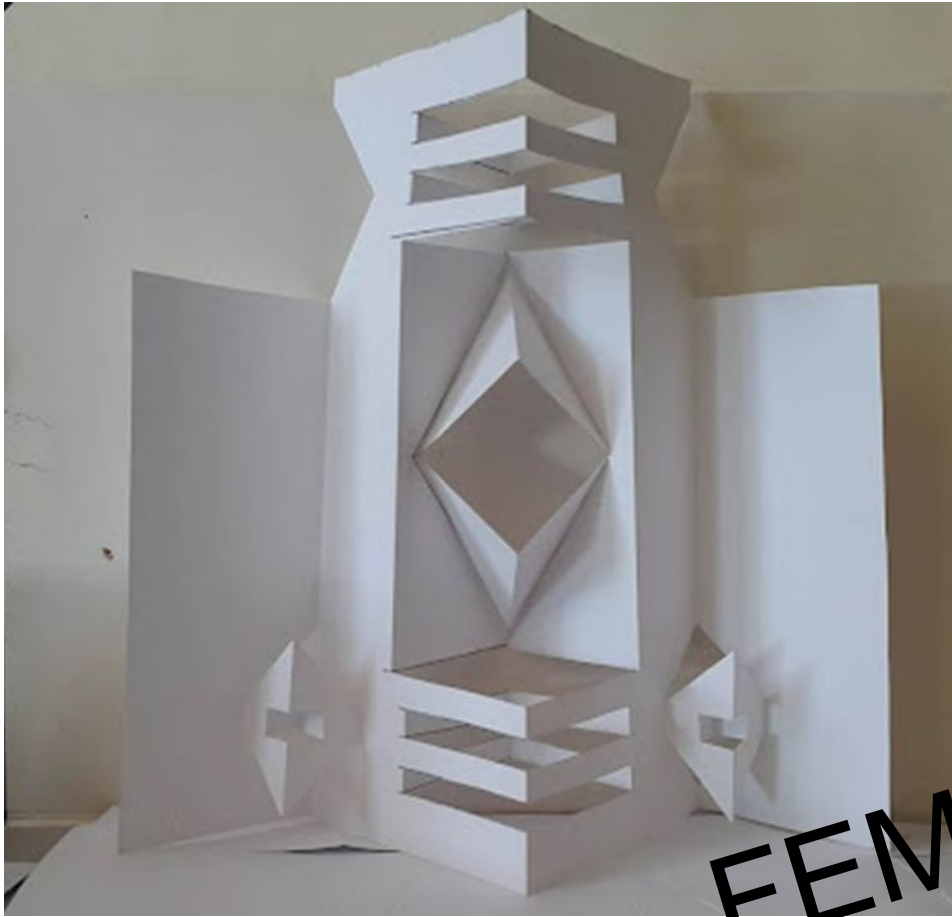
Com podem transformar
una superfície 2D en un volum?



Com podem transformar una superfície 2D en un volum?

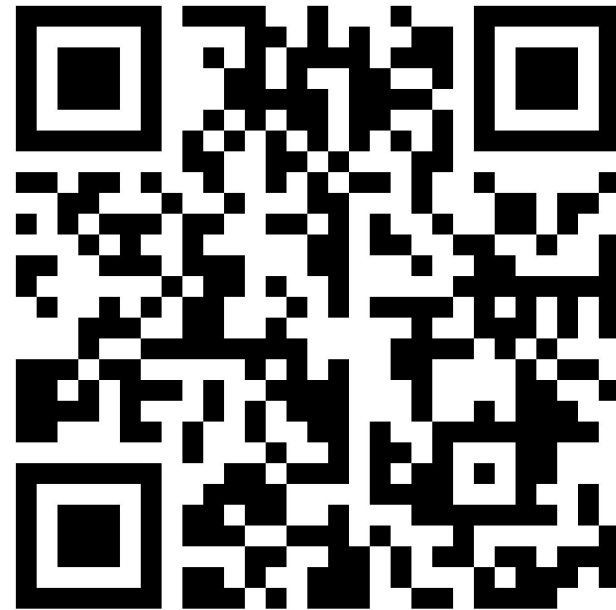


Com podem transformar
una superfície 2D en un volum?



FEM-HO!

I COMPARTIM-HO!



tuit.cat/iK8bR